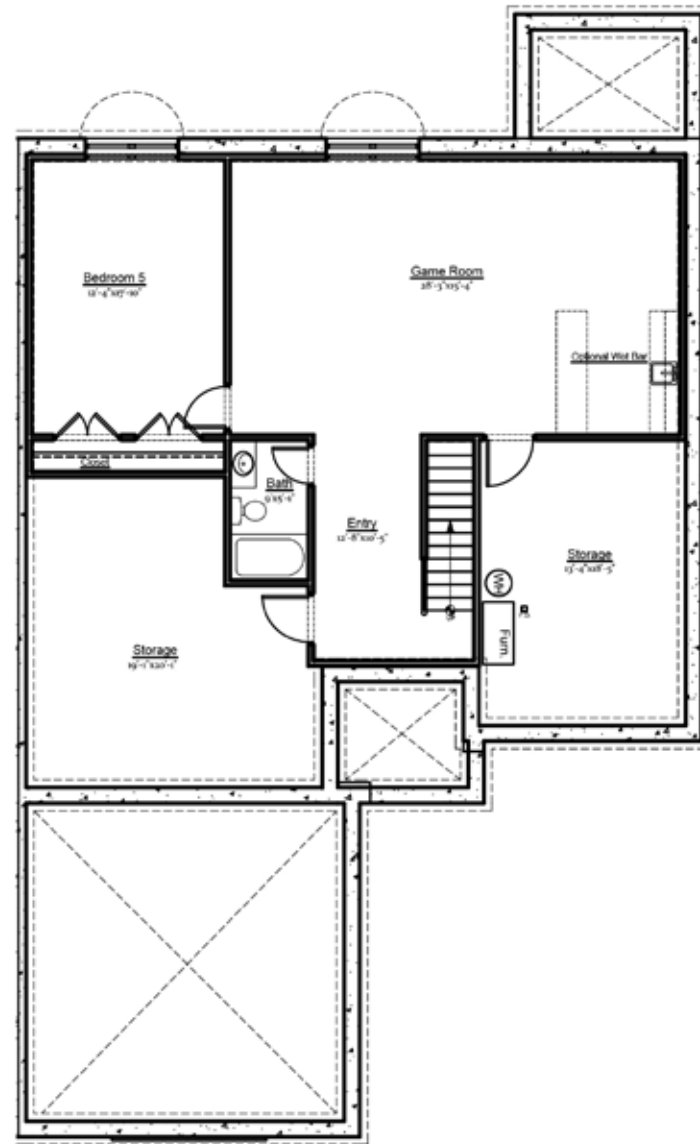




BENJAMIN MARCUS HOMES

High Quality Custom Homes



BASEMENT

The basement in the Capri allows buyers to finish a spacious game room, bedroom and full bath, while preserving ample storage space. Additional finish options include an exercise room, wet bar, and gas fireplace.



BENJAMIN MARCUS HOMES HEADQUARTERS & DESIGN GALLERY

121 Hillpointe Drive, Suite 700, Canonsburg, PA 15317

724.255.0861 | info@benjaminmarcushomes.com

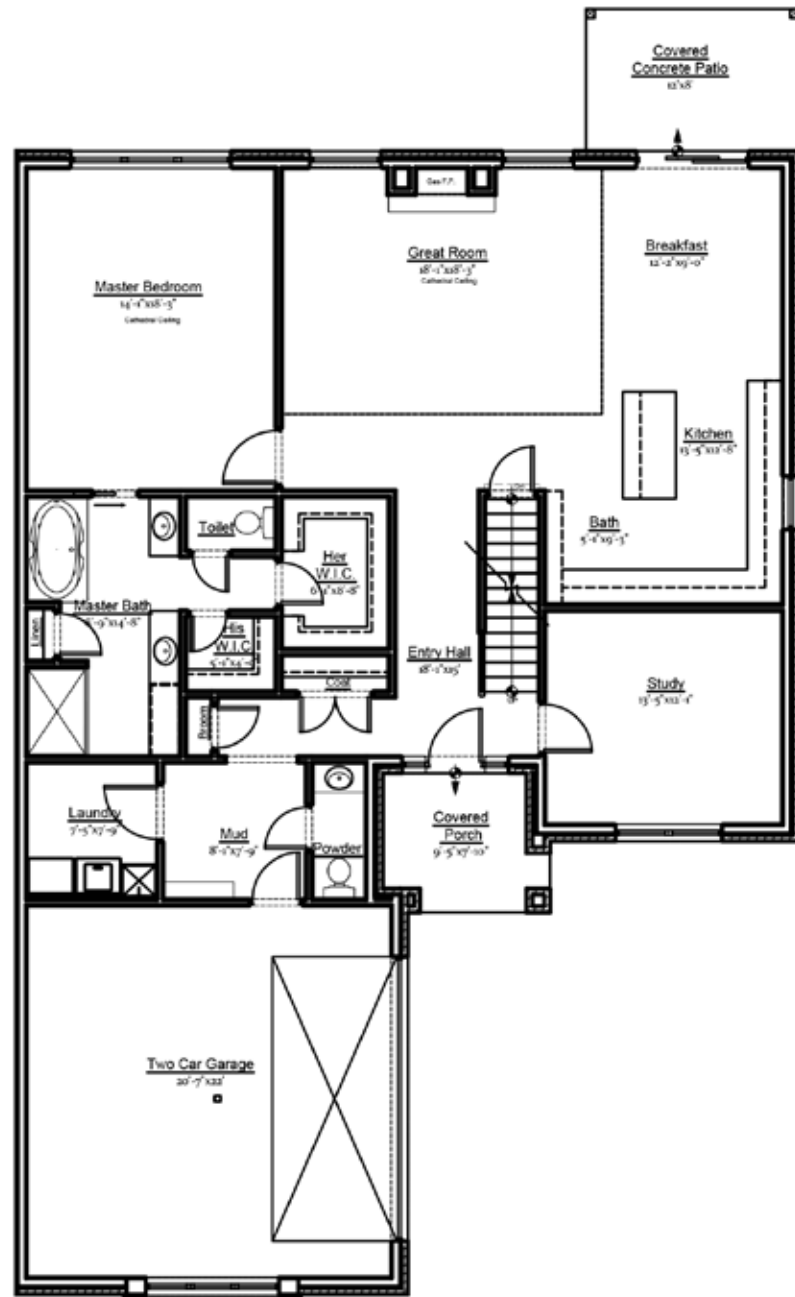
www.benjaminmarcushomes.com



CAPRI

CAPRI

The Capri model offers one-level living with an owner-centric layout, while providing a little more breathing room for guests and relatives. This 1.5 story design is our most popular floorplan in Siena at St. Clair. The varying masonry exteriors convey a unique, individual style, while each home is adorned with granite countertops, maple cabinetry, hardwood floors, decorative trim & designer lighting.



FIRST FLOOR

The Capri model offers a first-floor master suite, two-story entry, vaulted great room with two-story fireplace, eat-in kitchen, and study or dining room option. In addition, the main floor also includes a mud room, laundry and powder room.



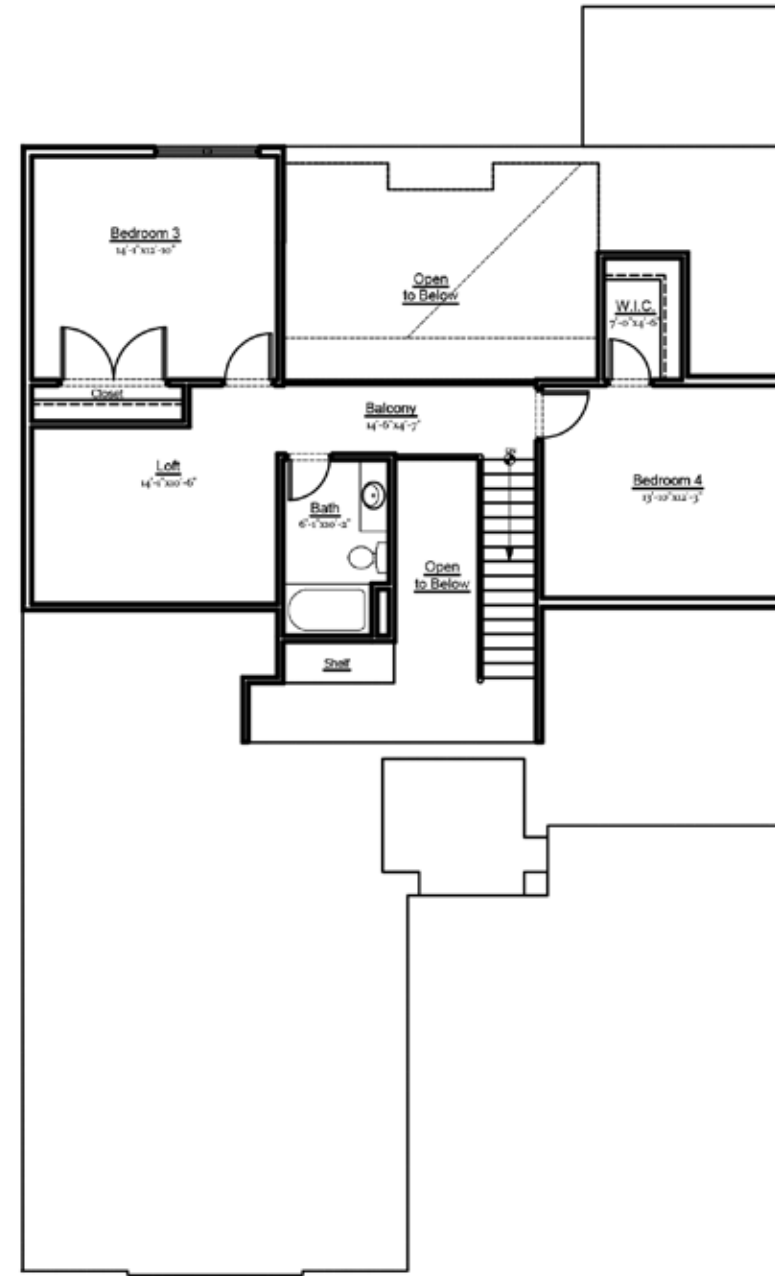
3 - 4 BEDROOMS



2.5 - 3.5 BATHROOMS



2 CAR GARAGE



SECOND FLOOR

The upper level features two generously sized bedrooms, full bathroom, and loft area with many flexible uses. A breathtaking view into the two-story great room and entry set the Capri apart from other typical patio home styles.